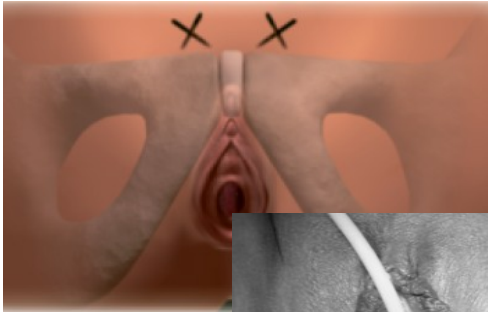


# KIM<sup>®</sup> System

## SURGICAL GUIDE

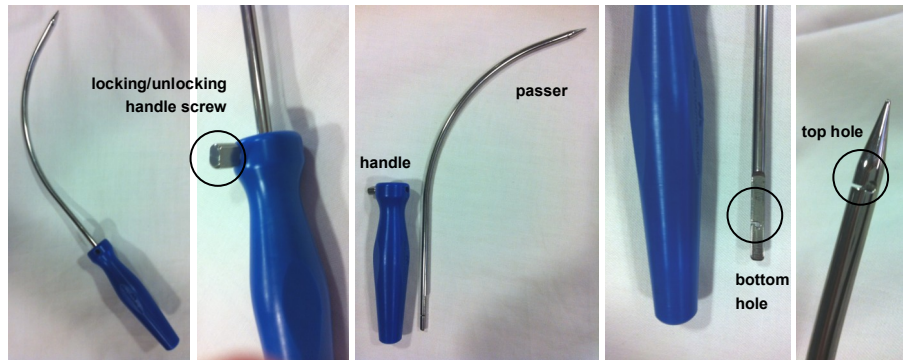
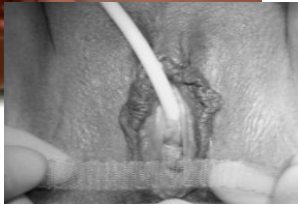
### TVT Retropubic Technique



#### 1. Mark Exit Points—Abdominal and Vaginal incisions

Locate the reference exit points; 2 cms each side of the midline, immediately above the pubic symphysis. Mark these exit points.

Make a 1cm midline vaginal incision starting 1 cm proximal to the urethral meatus.



Elements needed:  
KIM Mesh + 2 Sling Passers with a removable handle to permit up/down, down/up approaches.

Both tips of the Sling Passer have a hole to insert the thread located at the tip of every Kim Sling.



#### 2. Dissect and insert the Sling Passer lateral to the urethra.



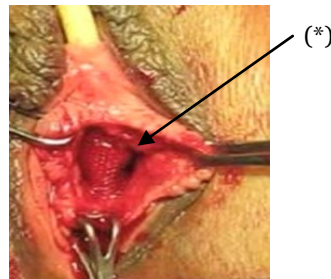
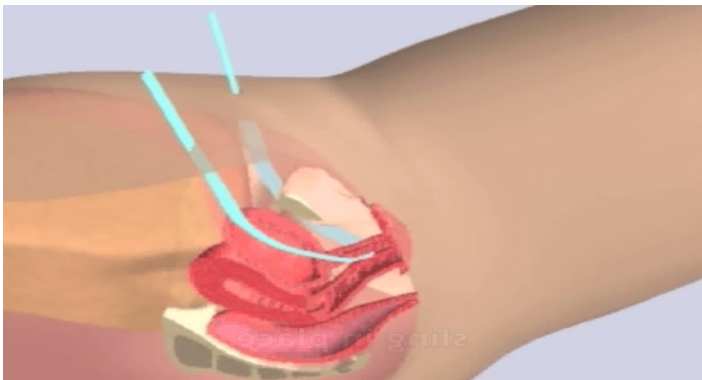
#### 3. Remove the Handle from the Passer. Insert the traction suture through the hole at the tip of the Passer. Repeat same maneuver at the contralateral side.



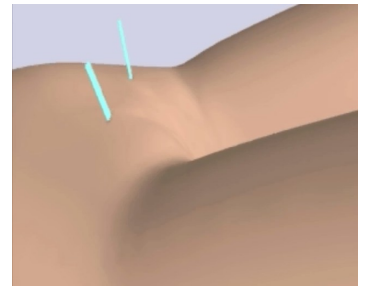
#### 4. Pull upwards (down/up approach) the Sling Passer to bring the tip of Kim sling to the abdominal wall and through out the skin.



#### 5. Perform cystoscopy to check bladder integrity.



#### 6. Ensure that the mesh lies flat and (\*) in full contact under the urethra. Close vaginal incision.



#### 7. Make final mesh adjustment. Cut the ends of the sling at the skin level and close abdominal skin incisions.