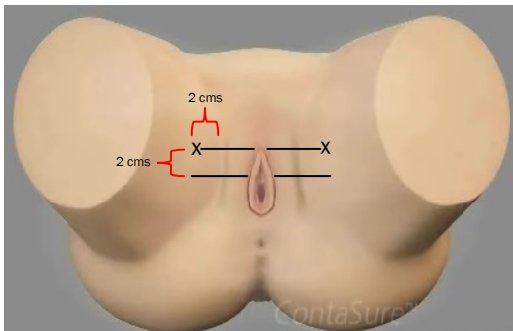


IN-OUT Technique



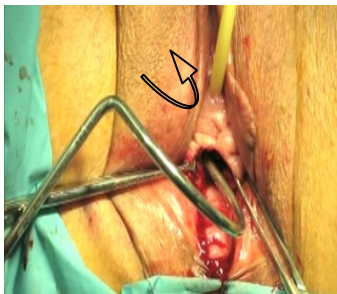
1. Mark Exit Points—Vaginal incision

Needle exit points location: Imagine an horizontal line at the level of the clitoris. Mark the two exit points two cm lateral to the thigh folds. Perform a minimal incision at the exit points with the tip of a scalpel.

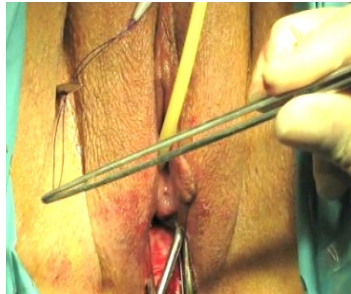


On the second line and at 2cm lateral to the folds of the thigh, mark the reference exit points.

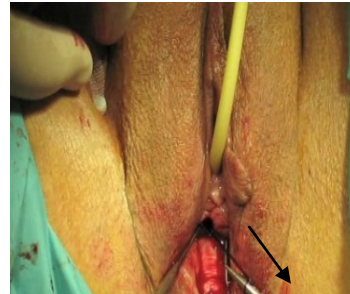
Vaginal Incision: Longitudinal 2cm incision starting 1cm below the urethral meatus.



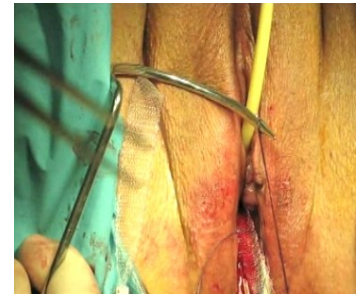
2. Dissect the paraurethral space and insert the needle from the vagina towards the exit point.



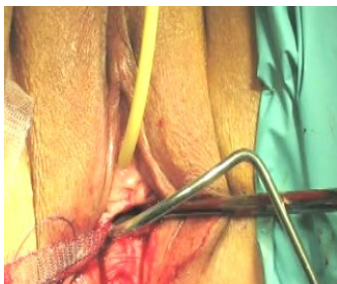
3. Insert the traction thread of the KIM sling inside the groove of the needle's tip.



4. Pull back the needle passing the sling from the exit point to the vagina.



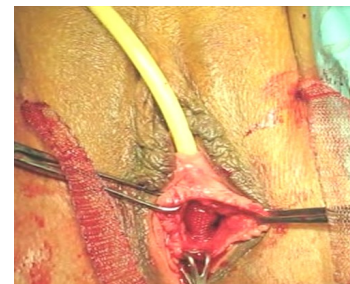
5. Insert the traction thread of the other side of the KIM sling into the groove of the contralateral needle.



6. Insert the needle and the sling from the vagina to the contralateral exit point.



7. Make the final mesh adjustment. Confirm that the mesh lies **flat and in full contact with the urethra**. Knotless mesh has less shrinkage than standard meshes.



8. Make final mesh adjustment and close the vaginal incision.



9. Cut the excess part of the sling at the skin level and close the exit point incisions.