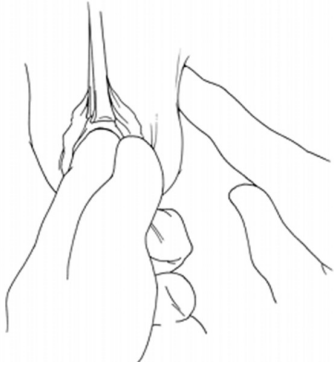


KIM® System

SURGICAL GUIDE

OUT-IN Technique



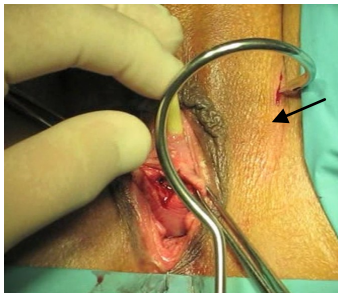
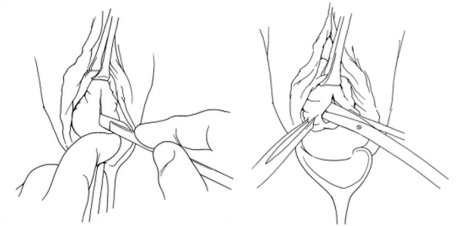
1. Insertion Points location:

At the level of the clitoris, locate the groin area incision just 1 cm inferior to the Adductor Longus Tendinous insertion. Perform two small skin incisions at the needle entry points with the scalpel.

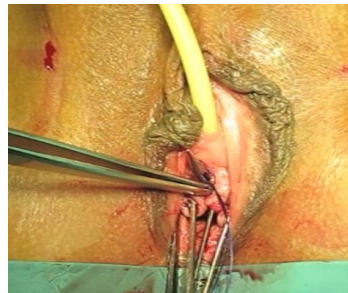


2. Perform 2 cm longitudinal anterior wall incision.

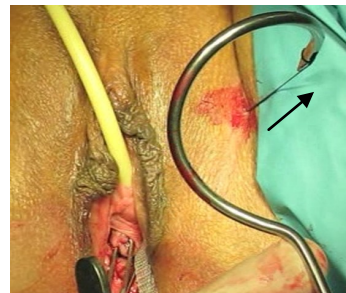
Perform periurethral scissor **wide** dissection to create enough space to leave the mesh fully extended. The KIM sling is 1.2cm wide



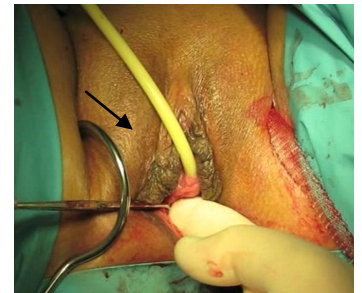
3. Insert the needle of the patient's left side from the insertion point to the vagina by surgeons finger guidance.



4. Once the tip of the needle appears at the vaginal incision, insert the Kim traction suture inside the groove of the needle tip.



5. Pull the needle back bringing the sling from the vagina up to the skin incision.



6. Insert the needle of the patient's right side from the insertion point to the vagina by surgeons finger guidance.



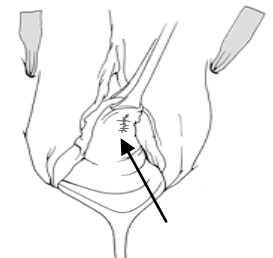
7. Once the tip of the needle appears at the vaginal incision, insert the other Kim traction suture in the groove of the needle tip.



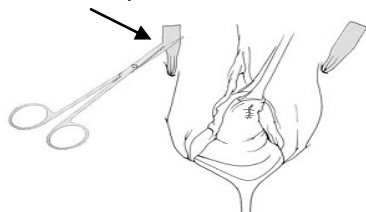
8. Pull the needle and be sure to maintain the mesh fully extended while advancing it towards the urethra.



9. Make the final mesh adjustment. Confirm that the mesh lies flat and in full contact with the urethra. Knotless mesh has less shrinkage than standard meshes.



10. Close the vaginal incision before cutting the excess of mesh at the skin level.



11. As the last step cut the excess of mesh at the skin incision and close the skin incision.